

A hand in a grey suit sleeve points to a colorful transit map. The map features various colored lines representing different transit routes. Overlaid on the map is the text "Answering Local Questions (Allegheny County)" in a bold, white, sans-serif font with a slight drop shadow.

Answering Local Questions (Allegheny County)

Navigation - Homepage



Data and analysis for informed and equitable decision-making

An information hub to better understand
issues affecting Allegheny County residents.
[Learn more about our data sources.](#)

Enter a phrase or keyword

Search

Examples: *foster care, housing, gun violence*

Dashboards
Datasets
Infographics
Reports
All Content Types

Two
different
ways to
get data





Overview

Oftentimes, some of the best questions we can ask are the ones pertaining to our local communities

Local Resources



Allegheny County Analytics

- <https://www.alleghenycountyanalytics.us/>

We will be exploring data published directly by
Allegheny County DHS

*As of December 2023 – While there is some data available on the site, it is not all-encompassing. The site is relatively new, so the amount of resources there is less than ideal. However, it is a project under development so expect improvements to be made in the quantity of data made available to the public on this website.

Navigation: Datasets

These are your
standard tabular
datasets



Datasets


Datasets to better understand issues affecting Allegheny County residents.

Filter by topic of interest



[Home](#) » [Datasets](#)

Filter by

All Content Types ▾ Any Topic ▾ Published between Start Date  End Date 



Generating a Fully Synthetic Human Services Dataset

SEPTEMBER 1, 2023
DATASETS, REPORTS



Community Need Index

MAY 13, 2021
DATASETS, REPORTS

The Allegheny County Need Index was
developed to identify areas of the



These
are the
datasets

Navigation: Dashboards

These are "interactive data dashboards". They still provide valuable data, but you will have to extract what you need yourself.

Dashboards

Interactive data dashboards to better understand issues affecting Allegheny County residents.

Filter by topic of interest

[Home](#) » Dashboards

Filter by

All

Content Types

Any Topic

Published between

Start Date

End Date



Trends in people experiencing sheltered and unsheltered homelessness: Interactive Dashboard



Point-in-Time Count of People Experiencing Homelessness: Annual Reports



Calls to the SeniorLine: Interactive Dashboard

APRIL 13, 2023
DASHBOARDS

These are the dashboards

Finding data step-by-step

Simple Example 1
(using datasets)

**Is there a relationship
between family poverty rate
and median rent?**

Example hypothesis:

There is a negative relationship between a census tract's family poverty rate and its median rent.

Data and analysis for informed and equitable decision-making

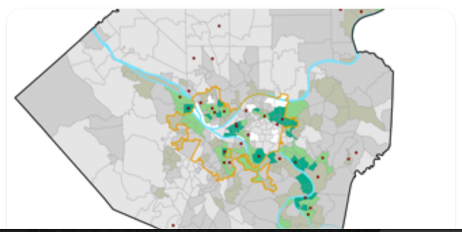
An information hub to better understand issues affecting Allegheny County residents.
[Learn more about our data sources.](#)

Click on Content Types

Examples: *foster care, housing, gun violence*



Featured Work



Data Tools



Quick Count
Access data about residents' involvement with public systems,



Firefox File Edit View History Bookmarks Tools Window Help

Home - Allegheny Analytics

https://www.alleghenycountyanalytics.us

Allegheny County Analytics

Home Topics Content Types Data Tools About

Home Topics Content Types Data Tools About

Data and analysis for informed and equitable decision-making

An information hub to better understand issues affecting Allegheny County residents.
[Learn more about our data sources.](#)

Enter a phrase or keyword **Search**

Examples: foster care, housing, gun violence

Featured Work

Data Tools

Quick Count
Access data about residents' involvement with public systems,

https://www.alleghenycountyanalytics.us/content-types/datasets/

- Dashboards
- Datasets**
- Infographics
- Reports
- All Content Types

Click on Datasets



Datasets

Datasets to better understand...

Start by selecting our topic



Home » Datasets

Filter by

- All
- Content Types
- Any Topic
- Published between
- Start Date
- End Date



Generating a Fully Synthetic Human Services Dataset

SEPTEMBER 1, 2023
DATASETS, REPORTS



Community Need Index

MAY 13, 2021
DATASETS, REPORTS

The Allegheny County Need Index was



Datasets

Datasets to better understand issues affecting Allegheny County residents.

Home » Datasets

Filter by

Filter by

- All
- Content Types
- Any Topic
 - Community Well-Being (1)
 - Economic Security (1)
 - Housing and Basic Needs (1)
 - Innovation and Reform (1)
- Published between
- Start Date
- End Date



Generating a Fully Synthetic Human Services Dataset

SEPTEMBER 1, 2023
DATASETS, REPORTS



Community Need Index

MAY 13, 2021
DATASETS, REPORTS
The Allegheny County Need Index was

We can filter the datasets to narrow them down to the ones that might cover our topic.

Firefox File Edit View History Bookmarks Tools Window Help

100% Sat Dec 2 3:39 PM

Datasets Archives - Allegheny

https://www.alleghenycountyanalytics.us/content-types/datasets/?_topics=housing-and-basic-needs

Allegheny County Analytics

Home Topics Content Types Data Tools About


Datasets

Datasets to better understand issues affecting Allegheny County residents.

Home » Datasets

Filter by

All Content Types Housing and Basic Needs (1) Published between Start Date End Date



Community Need Index

MAY 13, 2021
DATASETS, REPORTS

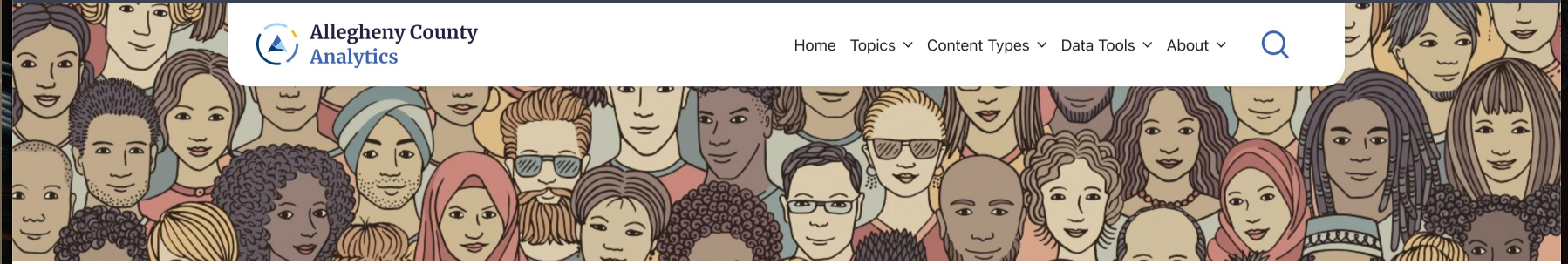
The Allegheny County Need Index was developed to identify areas of the County that have greater relative need.

This report and related materials

Privacy - Terms

https://www.alleghenycountyanalytics.us/2021/05/13/allegheny-county-community-need-index/

Click into the dataset to access it



[Home](#) » [Community Need Index](#)

Community Need Index

Download our dataset

MAY 13, 2021
DATASETS, REPORTS

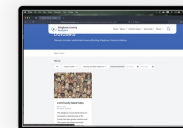


Current data and related materials

- [2018 dataset](#): download the most recent data
- [2021 report \(using 2018 data\)](#): read the latest report, which focuses on race and the whole county
- [Storymap](#): explore findings through an interactive story
- [Interactive map](#): extract data and examine demographics

What is the Community Need Index?

The Allegheny County Department of Human Services (DHS) conducts a Community Need Index (CNI) to identify specific areas that are in greater need, and face larger socioeconomic barriers, relative to others. The [newest version of the CNI index](#) ranks neighborhoods by need level by looking at:





There's our dataset!



- CNI_2018-estimates(2).csv
Open File
- CNI_2018-estimates(1).csv
Completed — 74.3 KB
- Data Warehouse report 1-2021-1.pdf
Completed — 2.6 MB


Show all downloads

[Home](#) » [Community Need Index](#)

Community Need Index

MAY 13, 2021
DATASETS, REPORTS



 **Current dataset and related materials**

- [2018 dataset](#): download the most recent data
- [2021 report \(using 2018 data\)](#): read the latest report, which focuses on race and the whole county
- [Storymap](#): explore findings through an interactive story
- [Interactive map](#): extract data and examine demographics

What is the Community Need Index?

The Allegheny County Department of Human Services (DHS) conducts a Community Need Index (CNI) to identify specific areas that are in greater need, and face larger socioeconomic barriers, relative to others. The [newest version of the CNI index](#) ranks neighborhoods by need level by looking at:



Home Insert Draw Page Layout Formulas Data Review View Automate

Callibri (Body) 12 A A

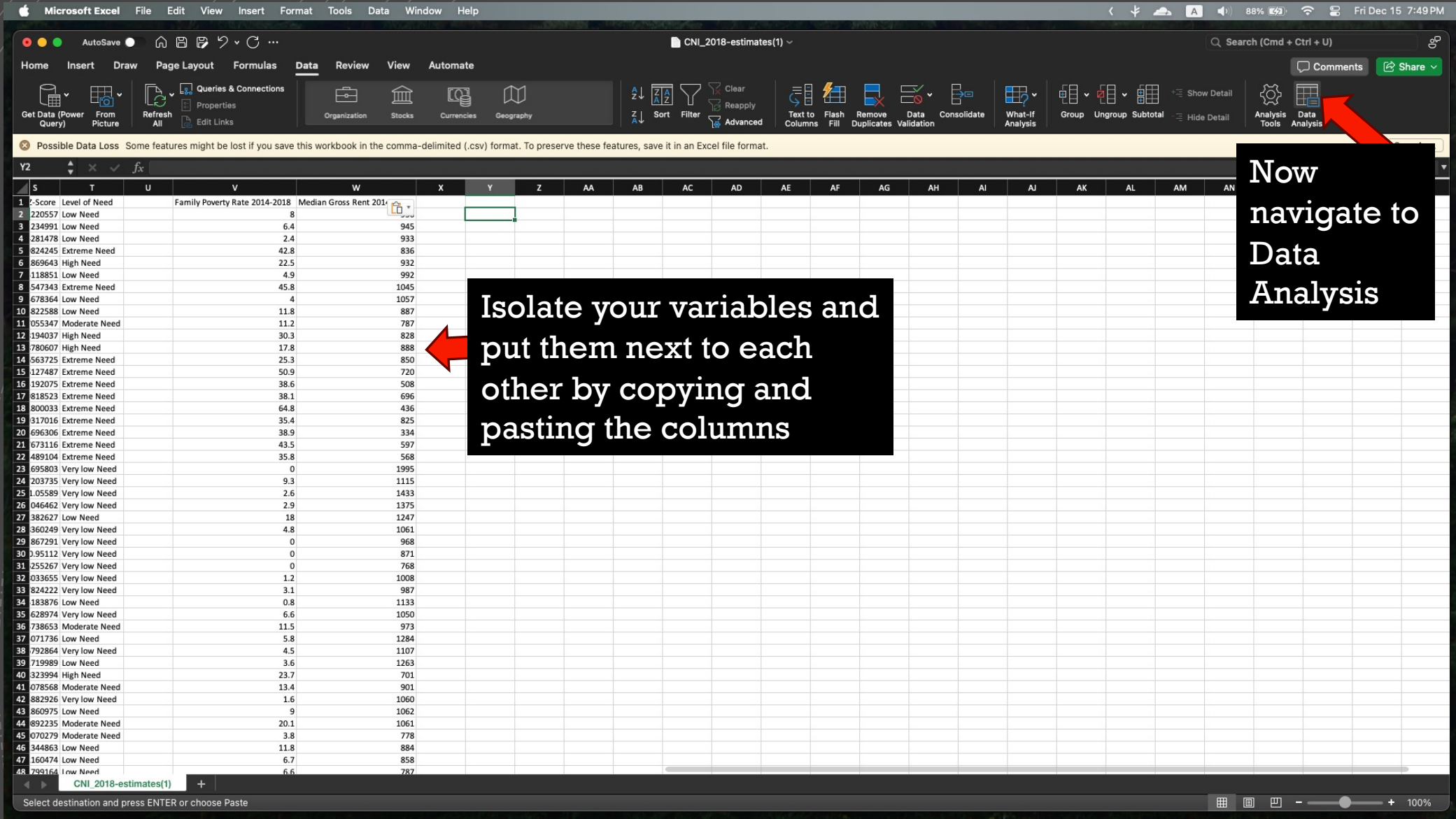
General Neutral Calculation Check Cell

AutoSum Fill Sort & Filter Find & Select Sensitivity Analyze Data

There's our variables!

	J	K	L	M	N	O	P	Q	R	S	T
1	Pop Rate 2014-2018	His or Lat Pop Rate 2014-2018	Family Poverty Rate 2014-2018	% of Single Mothers 2014-2018	Rate of those 25 and up without at least Bachelor's 2014-2018	Male unemployment/unattachment rate	Average 911 Dispatches for Shots Fired per 500	Median Home Value 2014-2018	Median Gross Rent 2014-2018	Z-Score	Level of Need
2	1.549973276	0.481026189	6.4	11.28318584	61.6	20.96153846	2.030999466	105600	0.122055735	Low Need	
3	0.665434381	1.700554529	6.4	19.71252567	53.9	13.0479103	1.959334566	118100	945	-0.234990996	Low Need
4	0.987575661	5.22459382	2.4	7.515923567	52.6	17.67109295	1.592863969	142900	933	-0.42814776	Low Need
5	0	1.380500431	42.8	52.10843373	81.8	35.8974359	7.333908542	90400	836	1.69824245	Extreme Need
6	3.97039031	1.480484522	22.5	17.78656126	73.2	25.33039648	7.402422611	62000	932	0.628696428	High Need
7	0.524405002	1.048810004	4.9	2.290076336	52.1	15.59748428	1.331181928	143600	992	-0.511885143	Low Need
8	3.464307139	3.599280144	45.8	34.64052288	87.2	93.07450157	2.234553089	152500	1045	2.24547343	Extreme Need
9	3.172651254	3.19724545	4	0	39.6	27.85904255	1.7461879	306200	1057	-0.467836433	Low Need
10	2.56097561	4.06504065	11.8	4.480286738	35.1	16.18798956	4.634146341	293700	887	-0.382258766	Low Need
11	4.030144168	4.456094364	11.2	26.57232704	51.1	19.51710262	5.439056356	226100	787	0.170553467	Moderate Need
12	2.315484805	2.098408104	30.3	24.73867596	64.3	23.22580645	8.538350217	87900	828	0.781940365	High Need
13	14.23345527	1.130695045	17.8	37.62376238	52.1	29.93710692	4.88859282	103300	888	0.587806067	High Need
14	0	17.85881253	25.3	44.22222222	80.5	29.58333333	13.60448808	53800	850	1.46563725	Extreme Need
15	7.569721116	0	50.9	42.6035503	97.5	50.95238095	17.92828685	35800	720	2.561274874	Extreme Need
16	3.075170843	0.113895216	38.6	42.42424242	93	30.3030303	21.29840547	53700	508	2.131920754	Extreme Need
17	0	0	38.1	48.29931973	93.7	70.07874016	24.19146184	42800	696	2.9818523	Extreme Need
18	0	0.36900369	64.8	34.65909091	90.8	66.875	25.95325953	38500	436	3.21800033	Extreme Need
19	0	1.407506702	35.4	29.42857143	83.4	46.03580563	18.56568365	46700	825	1.931701595	Extreme Need
20	0.52173913	1.565217391	38.9	31.22171946	82.6	40.31007752	30.60869565	66800	334	2.446963061	Extreme Need
21	2.131979695	0	43.5	42.99065421	88	25.31120332	39.08629442	56600	597	2.87673116	Extreme Need
22	0	0	35.8	48.52652259	84.6	46.53312789	14.16153568	60200	568	2.034891042	Extreme Need
23	25.60528247	5.02567865	0	1.388888889	15.2	6.502636204	0.146735143	608900	1995	-1.16958034	Very Low Need
24	13.8195004	4.593070105	9.3	0	19.8	23.30677291	0.201450443	476200	1115	-0.720373521	Very Low Need
25	12.04144497	2.77233268	2.6	1.046511628	15.3	10.82862524	0.280033604	426900	1433	-1.05589966	Very Low Need
26	8.961654459	3.015941405	2.9	5.295007564	8.6	10.72507553	0.560103404	421900	1375	-1.046462001	Very Low Need
27	1.819184123	5.016538037	18	5.275779376	39.4	15.69506726	4.575523705	205600	1247	-0.23826265	Low Need
28	2.628245725	1.804939835	4.8	8.9569161	18.3	12.19768665	0.728309056	310200	1061	-0.836024896	Very Low Need
29	14.32658451	3.257042254	0	0.922131148	17.3	23.43124166	0.506161972	342200	968	-0.867291049	Very Low Need
30	0.655021834	2.620087336	0	5.416666667	21.4	10.9929078	0.76419214	319200	871	-0.95119958	Very Low Need
31	2.750190985	1.680672269	0	4.956268222	48.9	14.4373673	0.840336134	147800	768	-0.625526677	Very Low Need
32	27.73318043	2.599388379	1.2	1.918465228	29.5	18.79699248	0.133792049	256300	1008	-0.803365496	Very Low Need
33	9.534576974	2.732240437	3.1	3.109243697	28.4	16.2601626	0.697192387	286600	987	-0.782422175	Very Low Need
34	2.06500956	2.332695985	0.8	5.623100304	52.7	16.51053864	1.147227533	121200	1133	-0.518387558	Low Need
35	2.735011773	6.122079333	6.6	4.249485949	43.7	15.59272012	0.815069734	150300	1050	-0.562897393	Very Low Need
36	1.074472027	3.18636532	11.5	18.12865497	59	20.44482464	3.149314561	86300	973	0.047386533	Moderate Need
37	2.804040309	1.695467884	5.8	12.18274112	36.4	15.02439024	1.662862732	275300	1284	-0.507173623	Low Need
38	1.107784431	2.275449102	4.5	5.629139073	41.8	9.570661896	2.934131737	220600	1107	-0.679286438	Very Low Need
39	1.146788991	10.95183486	3.6	18.3411215	57.7	18.3411215	3.899082569	114100	1263	-0.27199888	Low Need
40	1.854974705	0.21079258	23.7	51.74216028	87.5	27.93522267	8.937605396	33400	701	1.383239942	High Need
41	0	7.996323529	13.4	11.67883212	73.9	15.41802389	3.308823529	79400	901	0.060785679	Moderate Need
42	0.569476082	1.765375854	1.6	23.36956522	38.7	5.271317829	0.797266515	141700	1060	-0.588292606	Very Low Need
43	2.242846094	0.618716164	9	8.955223881	59.3	15.73660714	1.121423047	140000	1062	-0.286097475	Low Need
44	0.650095602	0.382409178	20.1	29.5687885	59	14.16026345	2.256214149	97300	1061	0.208922354	Moderate Need
45	4.767652384	0.724200362	3.8	13.86554622	63.9	26.75635277	2.715751358	95400	778	-0.007027917	Moderate Need
46	1.924447612	4.038964124	11.8	7.515151515	71.5	7.774798928	1.876930387	91100	884	-0.234486277	Low Need
47	1.104815864	2.606232295	6.7	6.802721088	65.6	25.90711176	1.388101983	106000	858	-0.116047443	Low Need
48	4.084997252	7.199120718	6.6	11.08013937	72.4	16.20145631	0.60450632	106100	787	-0.179916391	Low Need
49	5.150631681	1.700680272	3.8	13.29113924	67.7	17.1875	0.826044704	94900	796	-0.214891606	Low Need
50	7.708927107	0.108981727	5.8	13.95348837	70.9	19.7053407	1.445323157	87600	938	-0.073364694	Moderate Need

Now we can run correlations and/or a linear regression to assess the relationship between Family Poverty Rate and Median Gross Rent to answer our question!



Now
navigate to
Data
Analysis

Isolate your variables and
put them next to each
other by copying and
pasting the columns

AutoSave Home Insert Draw Page Layout Formulas Data Review View Automate

Get Data (Power Query) From Picture Refresh All Queries & Connections Properties Edit Links Organization Stocks Currencies Geography Sort Filter Advanced Text to Columns Flash Fill Remove Duplicates Data Validation Consolidate What-If Analysis Group Ungroup Subtotal Show Detail Hide Detail Analysis Tools Data Analysis

Possible Data Loss Some features might be lost if you save this workbook in the comma-delimited (.csv) format. To preserve these features, save it in an Excel file format.

	S	T	U	V	W	X	Y	Z	AA	AB	AC	AD	AE	AF	AG	AH	AI	AJ	AK	AL	AM	AN
1	2-Score	Level of Need		Family Poverty Rate 2014-2018	Median Gross Rent 2014-2018																	
2	220557	Low Need			8																	
3	234991	Low Need			6.4																	
4	281478	Low Need			2.4																	
5	824245	Extreme Need			42.8																	
6	869643	High Need			22.5																	
7	118851	Low Need			4.9																	
8	547343	Extreme Need			45.8																	
9	678364	Low Need			4																	
10	822588	Low Need			11.8																	
11	055347	Moderate Need			11.2																	
12	194037	High Need			30.3																	
13	780607	High Need			17.8																	
14	563725	Extreme Need			25.3																	
15	127487	Extreme Need			50.9																	
16	192075	Extreme Need			38.6																	
17	818523	Extreme Need			38.1																	
18	800033	Extreme Need			64.8																	
19	317016	Extreme Need			35.4																	
20	696306	Extreme Need			38.9																	
21	673116	Extreme Need			43.5																	
22	489104	Extreme Need			35.8																	
23	695803	Very low Need			0																	
24	203735	Very low Need			9.3																	
25	1.05589	Very low Need			2.6																	
26	046462	Very low Need			2.9																	
27	382627	Low Need			18																	
28	360249	Very low Need			4.8																	
29	867291	Very low Need			0																	
30	0.95112	Very low Need			0																	
31	255267	Very low Need			0																	
32	033655	Very low Need			1.2																	
33	824222	Very low Need			3.1																	
34	183876	Low Need			0.8																	
35	628974	Very low Need			6.6																	
36	738653	Moderate Need			11.5																	
37	071736	Low Need			5.8																	
38	792864	Very low Need			4.5																	
39	719989	Low Need			3.6																	
40	323994	High Need			23.7																	
41	078568	Moderate Need			13.4																	
42	882926	Very low Need			1.6																	
43	860975	Low Need			9																	
44	892235	Moderate Need			20.1																	
45	070279	Moderate Need			3.8																	
46	344863	Low Need			11.8																	
47	160474	Low Need			6.7																	
48	799164	Low Need			6.6																	

Home Insert Draw Page Layout Formulas Data Review View Automate

Get Data (Power Query) From Picture Refresh All Queries & Connections Properties Edit Links

Organization Stocks Currencies Geography

Sort Filter Clear Reapply Advanced

Text to Columns Flash Fill Remove Duplicates Data Validation Consolidate What-If Analysis

Group Ungroup Subtotal Show Detail Hide Detail Analysis Tools Data Analysis

	S	T	U	V	W	X	Y	Z	AA	AB	AC	AD	AE	AF	AG	AH	AI	AJ	AK	AL	AM	AN	AO	AP	AQ	AR
1	CNI Z-Score	Level of Need		Family Poverty Rate 2014-2018	Median Gross Rent 2014-2018																					
2	-0.1220557	Low Need			8		936																			
3	-0.234991	Low Need			6.4		945																			
4	-0.4281478	Low Need			2.4		933																			
5	1.69824245	Extreme Need			42.8		836																			
6	0.62869643	High Need			22.5		932																			
7	-0.5118851	Low Need			4.9		992																			
8	2.24547343	Extreme Need			45.8		1045																			
9	-0.4678364	Low Need			4		1057																			
10	-0.3822588	Low Need			11.8		887																			
11	0.17055347	Moderate Need			11.2		787																			
12	0.78194037	High Need			30.3		828																			
13	0.58780607	High Need			17.8		888																			
14	1.46563725	Extreme Need			25.3		850																			
15	2.56127487	Extreme Need			50.9		720																			
16	2.13192075	Extreme Need			38.6		508																			
17	2.9818523	Extreme Need			38.1		696																			
18	3.21800033	Extreme Need			64.8		436																			
19	1.9317016	Extreme Need			35.4		825																			
20	2.44696306	Extreme Need			38.9		334																			
21	2.87673116	Extreme Need			43.5		597																			
22	2.03489104	Extreme Need			35.8		568																			
23	-1.1695803	Very Low Need			0		1995																			
24	-0.7203735	Very Low Need			9.3		1115																			
25	-1.05589	Very Low Need			2.6		1433																			
26	-1.046462	Very Low Need			2.9		1375																			
27	-0.2382627	Low Need			18		1247																			
28	-0.8360249	Very Low Need			4.8		1061																			
29	-0.867291	Very Low Need			0		968																			
30	-0.95112	Very Low Need			0		871																			
31	-0.6255267	Very Low Need			0		768																			
32	-0.8033655	Very Low Need			1.2		1008																			
33	-0.7824222	Very Low Need			3.1		987																			
34	-0.5183876	Low Need			0.8		1133																			
35	-0.5628974	Very Low Need			6.6		1050																			
36	0.04738653	Moderate Need			11.5		973																			
37	-0.5071736	Low Need			5.8		1284																			
38	-0.6792864	Very Low Need			4.5		1107																			
39	-0.2719989	Low Need			3.6		1263																			
40	1.38323994	High Need			23.7		701																			
41	0.06078568	Moderate Need			13.4		901																			
42	-0.5882926	Very Low Need			1.6		1060																			
43	-0.2860975	Low Need			9		1062																			
44	0.20892235	Moderate Need			20.1		1061																			
45	-0.0070279	Moderate Need			3.8		778																			
46	-0.2344863	Low Need			11.8		884																			
47	-0.1160474	Low Need			6.7		858																			
48	-0.1799164	Low Need			6.6		787																			
49	-0.2148916	Low Need			3.8		796																			
50	0.0737647	Moderate Need			5.8		938																			

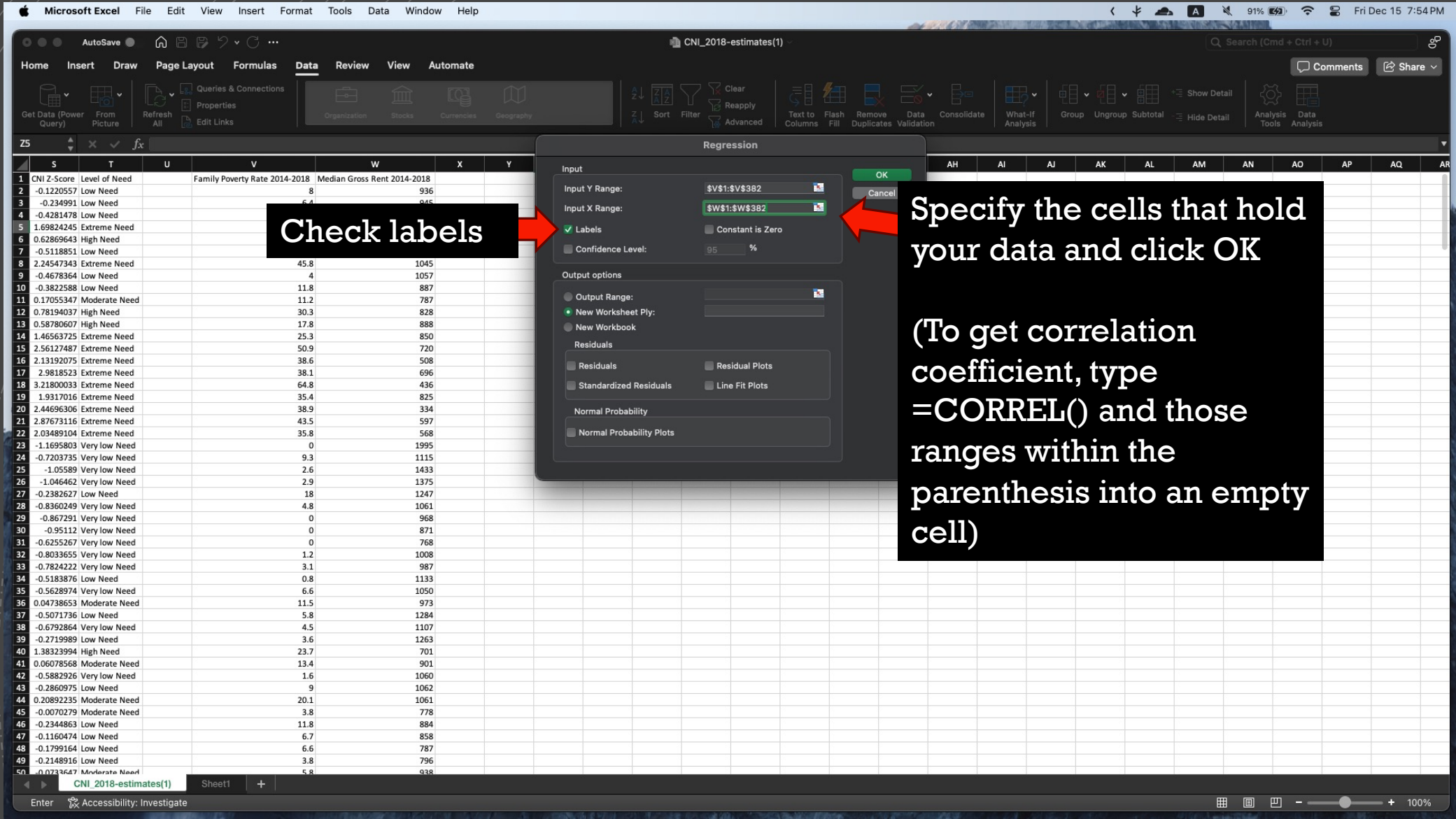
Data Analysis

Analysis Tools

- Rank and Percentile
- Regression
- Sampling
- t-Test: Paired Two Sample for Means
- t-Test: Two-Sample Assuming Equal Variances
- t-Test: Two-Sample Assuming Unequal Variances

OK Cancel

Scroll down on the menu and select regression



Check labels

Specify the cells that hold your data and click OK

(To get correlation coefficient, type =CORREL() and those ranges within the parenthesis into an empty cell)

	S	T	U	V	W	X	Y
1	CNI Z-Score	Level of Need		Family Poverty Rate 2014-2018	Median Gross Rent 2014-2018		
2	-0.1220557	Low Need		8	936		
3	-0.234991	Low Need		6.4	945		
4	-0.4281478	Low Need					
5	1.69824245	Extreme Need					
6	0.62869643	High Need					
7	-0.5118851	Low Need					
8	2.24547343	Extreme Need		45.8	1045		
9	-0.4678364	Low Need		4	1057		
10	-0.3822588	Low Need		11.8	887		
11	0.17055347	Moderate Need		11.2	787		
12	0.78194037	High Need		30.3	828		
13	0.58780607	High Need		17.8	888		
14	1.46563725	Extreme Need		25.3	850		
15	2.56127487	Extreme Need		50.9	720		
16	2.13192075	Extreme Need		38.6	508		
17	2.9818523	Extreme Need		38.1	696		
18	3.21800033	Extreme Need		64.8	436		
19	1.9317016	Extreme Need		35.4	825		
20	2.44696306	Extreme Need		38.9	334		
21	2.87673116	Extreme Need		43.5	597		
22	2.03489104	Extreme Need		35.8	568		
23	-1.1695803	Very Low Need		0	1995		
24	-0.7203735	Very Low Need		9.3	1115		
25	-1.05589	Very Low Need		2.6	1433		
26	-1.046462	Very Low Need		2.9	1375		
27	-0.2382627	Low Need		18	1247		
28	-0.8360249	Very Low Need		4.8	1061		
29	-0.867291	Very Low Need		0	968		
30	-0.95112	Very Low Need		0	871		
31	-0.6255267	Very Low Need		0	768		
32	-0.8033655	Very Low Need		1.2	1008		
33	-0.7824222	Very Low Need		3.1	987		
34	-0.5183876	Low Need		0.8	1133		
35	-0.5628974	Very Low Need		6.6	1050		
36	0.04738653	Moderate Need		11.5	973		
37	-0.5071736	Low Need		5.8	1284		
38	-0.6792864	Very Low Need		4.5	1107		
39	-0.2719989	Low Need		3.6	1263		
40	1.38323994	High Need		23.7	701		
41	0.06078568	Moderate Need		13.4	901		
42	-0.5882926	Very Low Need		1.6	1060		
43	-0.2860975	Low Need		9	1062		
44	0.20892235	Moderate Need		20.1	1061		
45	-0.0070279	Moderate Need		3.8	778		
46	-0.2344863	Low Need		11.8	884		
47	-0.1160474	Low Need		6.7	858		
48	-0.1799164	Low Need		6.6	787		
49	-0.2148916	Low Need		3.8	796		
50	0.0737647	Moderate Need		5.8	938		

Microsoft Excel Book1

Home Insert Draw Page Layout Formulas Data Review View Automate

Get Data (Power Query) From Picture Refresh All Queries & Connections Properties Edit Links

Organization Stocks Currencies Geography

Sort Filter Advanced

Text to Columns Flash Fill Remove Duplicates Data Validation Consolidate What-If Analysis

Group Ungroup Subtotal Show Detail Hide Detail

Analysis Tools Data Analysis

F5

	A	B	C	D	E	F	G	H	I	J	K	L	M	N
1	SUMMARY OUTPUT													
2														
3	<i>Regression Statistics</i>													
4	Multiple R	0.4142953		Correlation Coefficient		-0.4142953								
5	R Square	0.1716406												
6	Adjusted R Square	0.1694549												
7	Standard Error	11.0365												
8	Observations	381												
9														
10	<i>ANOVA</i>													
11		<i>df</i>	<i>SS</i>	<i>MS</i>	<i>F</i>	<i>Significance F</i>								
12	Regression	1	9565.3981	9565.3981	78.530857	3.106E-17								
13	Residual	379	46163.84	121.80433										
14	Total	380	55729.238											
15														
16		<i>Coefficients</i>	<i>Standard Error</i>	<i>t Stat</i>	<i>P-value</i>	<i>Lower 95%</i>	<i>Upper 95%</i>	<i>Lower 95.0%</i>	<i>Upper 95.0%</i>					
17	Intercept	25.772506	1.7629671	14.618825	1.072E-38	22.306085	29.238928	22.306085	29.238928					
18	Median Gros	-0.0163143	0.001841	-8.8617637	3.106E-17	-0.0199341	-0.0126945	-0.0199341	-0.0126945					
19														
20														
21														
22														
23														

Correlation Coefficient (got as described on the previous slide and just pasted over to this sheet)

P-value (<0.05)

Regressing the Family Poverty Rate on Median Rent, we can see that there is a negative correlation between the two, and that there is a statistically significant relationship between Family Poverty Rate and a Median Rents

Finding data step-by-step

Simple Example 2
(using dashboards)

Is there a relationship between the strength of Pittsburgh's economy* and the total number of filed landlord/tenant cases?**

*Measured in the city's Gross Domestic Product (GDP)

** These almost always have to do with eviction. So, we are comparing economic strength to what we could find as an indicator of evictions

Example hypothesis:

There is a negative relationship between a Pittsburgh's Gross Domestic Product and the total amount of money claimed in landlord/tenant court cases.

Firefox File Edit View History Bookmarks Tools Window Help

Home - Allegheny Analytics

https://www.alleghenycountyanalytics.us

Allegheny County Analytics

Home Topics Content Types Data Tools About

Search

Click on Dashboards

Dashboards

Datasets

Infographics

Reports

All Content Types

Data and analysis for informed and equitable decision-making

An information hub to better understand issues affecting Allegheny County residents.
[Learn more about our data sources.](#)

Enter a phrase or keyword **Search**

Examples: foster care, housing, gun violence

Featured Work

Data Tools

Quick Count

Access data about residents' involvement with public systems,

Privacy - Terms

https://www.alleghenycountyanalytics.us/content-types/dashboards/

Data and analysis for informed and equitable decision-making

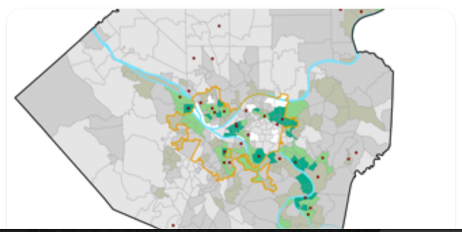
An information hub to better understand issues affecting Allegheny County residents.
[Learn more about our data sources.](#)

Click on Content Types

Examples: foster care, housing, gun violence



Featured Work



Data Tools



Quick Count
Access data about residents' involvement with public systems,



Home » Dashboards

Filter by

- All
- Content Types
 - ✓ Any Topic
 - Children, Youth and Families (3)
 - Community Well-Being (3)
 - Crime and Justice (9)
 - Housing and Basic Needs (6)**
 - Older Adults (2)
 - Substance Use and Mental Health (5)

We can filter the dashboards to narrow them down to the ones that might cover our topic.



Trends in people experiencing sheltered and unsheltered homelessness: Interactive Dashboard

MAY 23, 2023 DASHBOARDS

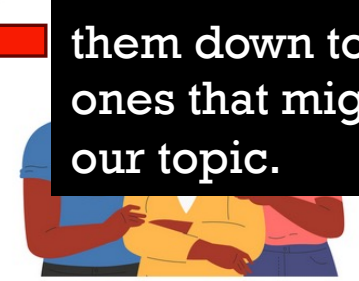
This dashboard shows trends in the number of people experiencing sheltered and unsheltered homelessness from 2021 to the present.



Point-in-Time Count of People Experiencing Homelessness: Annual Reports

MAY 23, 2023 DASHBOARDS, REPORTS

Each year, Allegheny County participates in a federally required national effort to count the number of people experiencing homelessness on a



Calls to the SeniorLine: Interactive Dashboard

APRIL 13, 2023 DASHBOARDS

What is this dashboard about? This dashboard displays information about the SeniorLine, a resource where individuals can receive information about services and programs for older adults in Allegheny County. SeniorLine

Click to open the dashboard



Allegheny County Analytics

Home Topics Content Types Data Tools About

Home » Landlord/Tenant Cases: Interactive Dashboard

Landlord/Tenant Cases: Interactive Dashboard

MARCH 31, 2023
DASHBOARDS

in f t

Current Dashboard

- [Dashboard](#) Landlord/Tenant cases from 2012 to present

What is this dashboard about?

These interactive dashboards contain information about Landlord/Tenant cases filed in Allegheny County in magisterial district courts from 2012 to the present. Users can see information about the number of cases filed over time, what happens to those cases as they proceed through the courts, how long it takes for cases to proceed through the courts, costs and case outcomes. The data do not record whether an eviction took place (e.g., tenant moved, tenant was ejected) at the end of the case. The data used for these dashboards are updated daily.

How is this dashboard being used?

With the lifting of the eviction moratorium and phasing out of the [emergency rental assistance program](#), landlord/tenant filings have increased back to pre-COVID levels. The county is using this information to help target investments that help

Privacy - Terms

Firefox File Edit View History Bookmarks Tools Window Help


https://www.alleghenycountyanalytics.us/content-types/dashboards/?_topics=housing-and-basic-needs

Allegheny County Analytics

Home Topics Content Types Data Tools About

Filter by


All Content Types Housing and Basic Needs (6) Published between Start Date End Date



Trends in people experiencing sheltered and unsheltered homelessness: Interactive Dashboard

MAY 23, 2023
DASHBOARDS


This dashboard shows trends in the number of people experiencing sheltered and unsheltered homelessness from 2021 to the present. What is this dashboard about? This dashboard displays: 1) the number [...]



Point-in-Time Count of People Experiencing Homelessness: Annual Reports

MAY 23, 2023
DASHBOARDS, REPORTS

Each year, Allegheny County participates in a federally required national effort to count the number of people experiencing homelessness on a single night in January. Allegheny County also performs a [...]



Landlord/Tenant Cases: Interactive Dashboard

MARCH 31, 2023
DASHBOARDS

What is this dashboard about? These interactive dashboards contain information about Landlord/Tenant cases filed in Allegheny County in magisterial district courts from 2012 to the present. Users can see information [...]

Privacy - Terms

Click into the dashboard to access it



This is our dashboard!

Home | Data and Definitions | **Cases Filed** | Rent and Amounts Claimed | Disposition | Money Amounts Awarded | Timeline | Legal Counsel

Landlord-Tenant Cases Filed in Allegheny County

These interactive dashboards show the flow of cases from 2012 to the present. The data used for these dashboards do not record whether an... in magisterial district... at happens to those... s and case outcomes. The... end of the case.

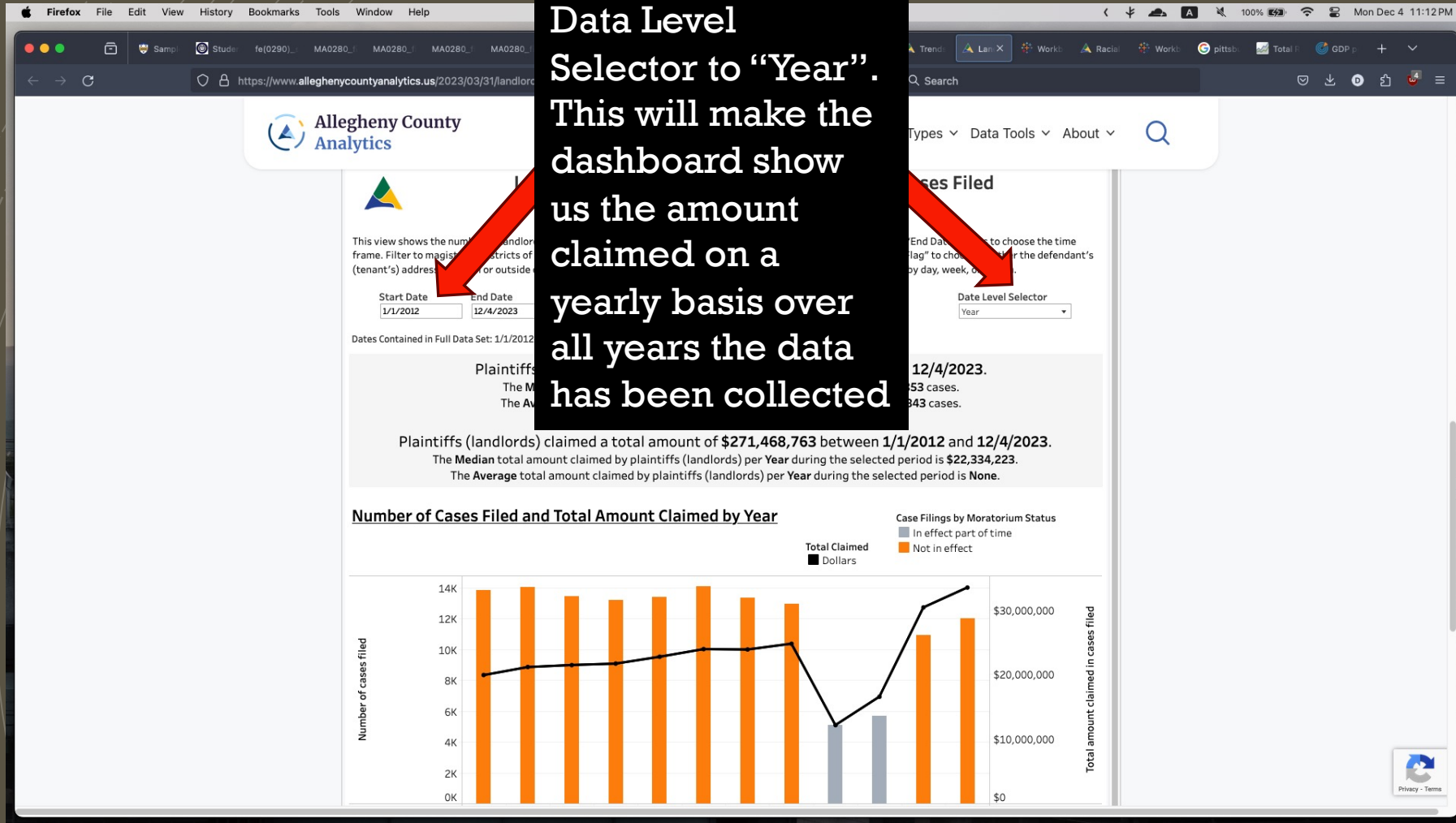
The data used for these dashboards

Learn more about how a Landlord...

We can click on Cases Filed to see some data we are interested in

- Data and Definitions
- Cases Filed**
- Rent and Amounts Claimed
- Disposition and Case Status
- Amounts Awarded in Cases Won by Landlords
- Timeline of Case Proceedings
- Impact of Legal Counsel

We can set the start date to 1/1/2012 and the Data Level Selector to "Year". This will make the dashboard show us the amount claimed on a yearly basis over all years the data has been collected





Landlord/Tenant Cases in Allegheny County - Cases Filed 1/1/2012 - 12/6/2023

This view shows the number of Landlord/Tenant cases filed over time in Allegheny County. Change the "Start Date" and "End Date" filters to choose the time frame. Filter to magisterial districts of interest by using the "District Court Number" filter. Use the "City of Pittsburgh Flag" to choose whether the defendant's (tenant's) address is within or outside of city limits. Use the "Date Level Selector" to choose whether filings are shown by day, week, or month.

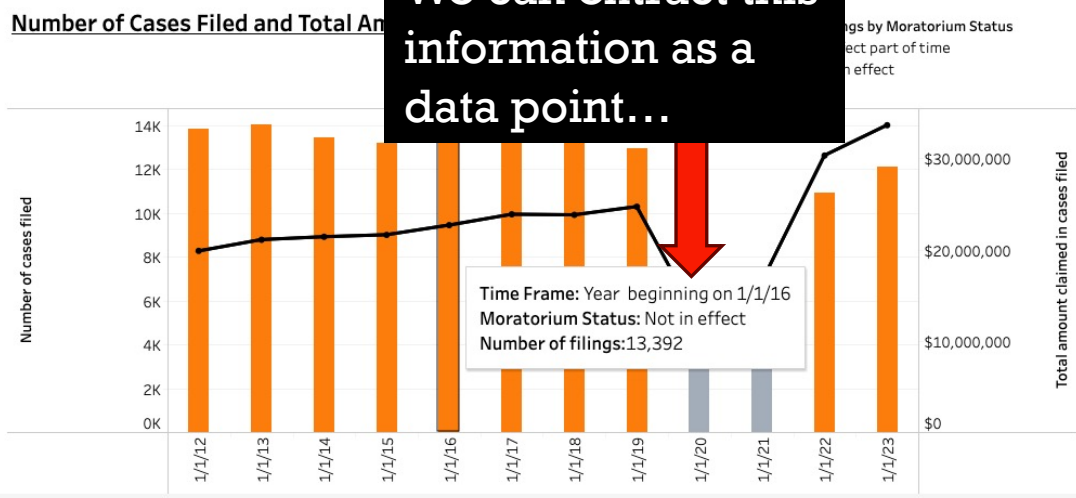
Start Date: 1/1/2012 End Date: 12/6/2023 District Court Number: (All) City of Pittsburgh Flag: (All) Date Level Selector: Year

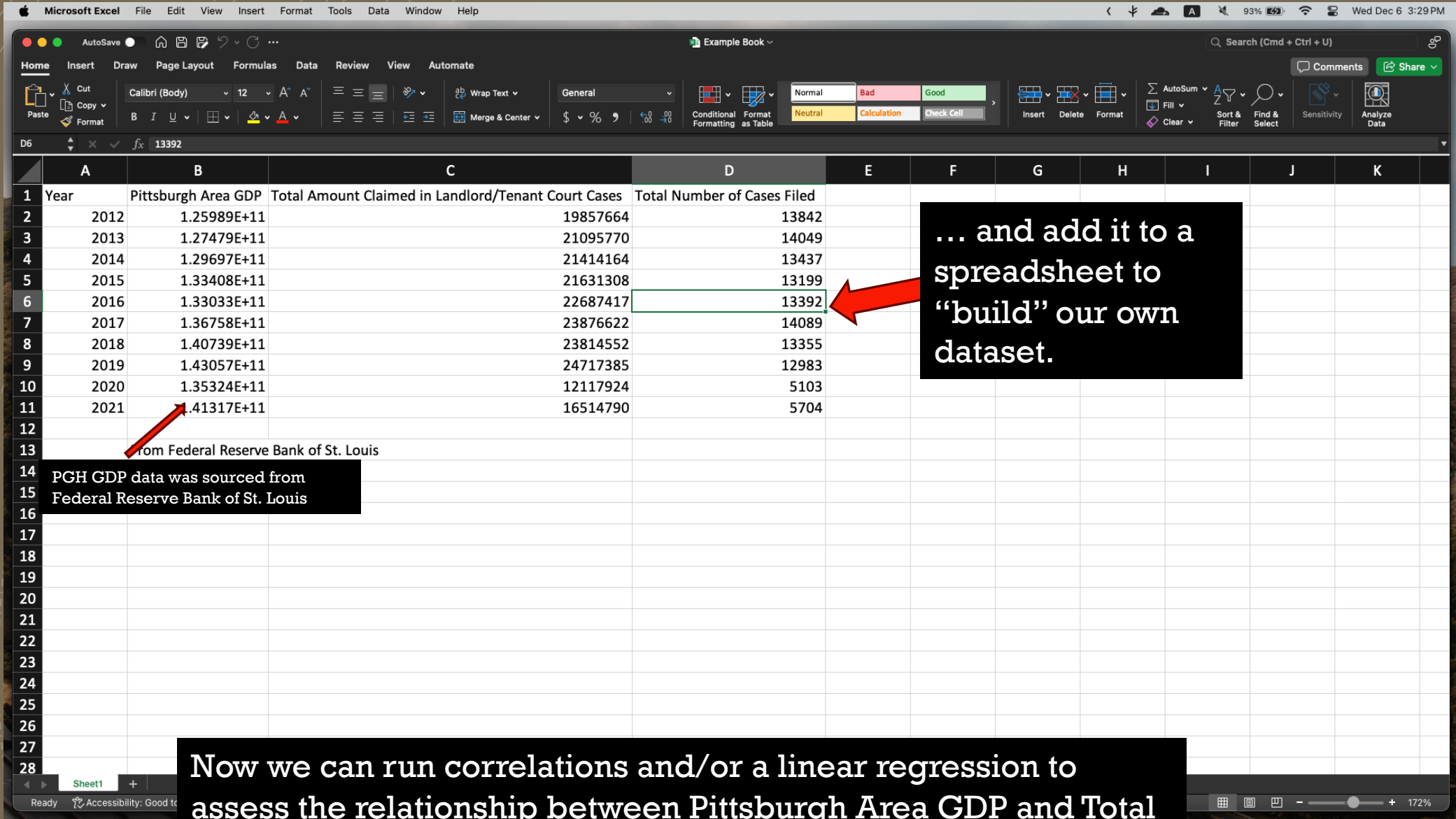
Dates Contained in Full Data Set: 1/1/2012-12/5/2023

Plaintiffs (landlords) filed **142,194** cases between 1/1/2012 and 12/6/2023.
The **Median** number of cases filed per Year during the selected period is **13,353** cases.
The **Average** number of cases filed per Year during the selected period is **11,850** cases.

Plaintiffs (landlords) claimed a total amount of **\$271,709,861** between 1/1/2012 and 12/6/2023.
The **Median** total amount claimed by plaintiffs (landlords) per Year during the selected period is **\$22,334,223**.
The **Average** total amount claimed by plaintiffs (landlords) per Year during the selected period is **\$22,334,223**.

We can extract this information as a data point...





Microsoft Excel File Edit View Insert Format Tools Data Window Help

AutoSave Home Insert Draw Page Layout Formulas Data Review View Automate

Get Data (Power Query) From Picture Refresh All Properties Edit Links

Organization Stocks Currencies Geography

Sort Filter Advanced

Text to Columns Flash Fill Remove Duplicates Data Validation Consolidate

What-If Analysis

Group Ungroup Subtotal Hide Detail

Analysis Tools Data Analysis

Search (Cmd + Ctrl + U) Comments Share

	A	B	C	D	E	F	G	H	I	J	K	L	M
1	Year	Pittsburgh Area GDP	Total Amount Claimed in Landlord/Tenant Cases	Total Number of Cases Filed	Pittsburgh Area C								
2	2012	1.25989E+11	19857664	13842	1.25989E+11								
3	2013	1.27479E+11	21095770	14049	1.27479E+11								
4	2014	1.29697E+11	21414164	13437	1.29697E+11								
5	2015	1.33408E+11	21631308	13199	1.33408E+11								
6	2016	1.33033E+11	22687417	13392	1.33033E+11								
7	2017	1.50698E+11	23876622	14089	1.50698E+11								
8	2018	1.54324E+11	23814552	13355	1.54324E+11								
9	2019	1.55925E+11	24717385	12983	1.55925E+11								
10	2020	1.47494E+11	12117924	5103	1.47494E+11								
11	2021	1.41317E+11	16514790	5704	1.41317E+11								
12													
13													
14													
15													
16													
17													
18													
19													
20													
21													
22													
23													
24													
25													
26													
27													
28													
29													
30													
31													
32													
33													

Sheet2 CNI_2018-estimates(1) Sheet3

Select destination and press ENTER or choose Paste

152%

Navigate to Data Analysis

Isolate your variables and put them next to each other by copying and pasting the columns

AutoSave Home Insert Draw Page Layout Formulas Data Review View Automate

Get Data (Power Query) From Picture Refresh All Properties Edit Links

Organization Stocks Currencies Geography

Sort Filter Advanced

Text to Columns Flash Fill Remove Duplicates Data Validation Consolidate What-If Analysis

Group Ungroup Subtotal Hide Detail

Analysis Tools Data Analysis

	A	B	C	D	E	F	G	H	I	J	K	L	M
1	Year	Pittsburgh Area GDP	Total Amount Claimed in Landlord/Tenant Cases										
2	2012	1.25989E+11	19857664										
3	2013	1.27479E+11	21095770										
4	2014	1.29697E+11	21414164										
5	2015	1.33408E+11	21631308										
6	2016	1.33033E+11	22687417										
7	2017	1.50698E+11	23876622										
8	2018	1.54324E+11	23814552										
9	2019	1.55925E+11	24717385										
10	2020	1.47494E+11	12117924	5103	1.47494E+11								
11	2021	1.41317E+11	16514790	5704	1.41317E+11								
12													
13													
14													
15													
16													
17													
18													
19													
20													
21													
22													
23													
24													
25													
26													
27													
28													
29													
30													
31													
32													
33													

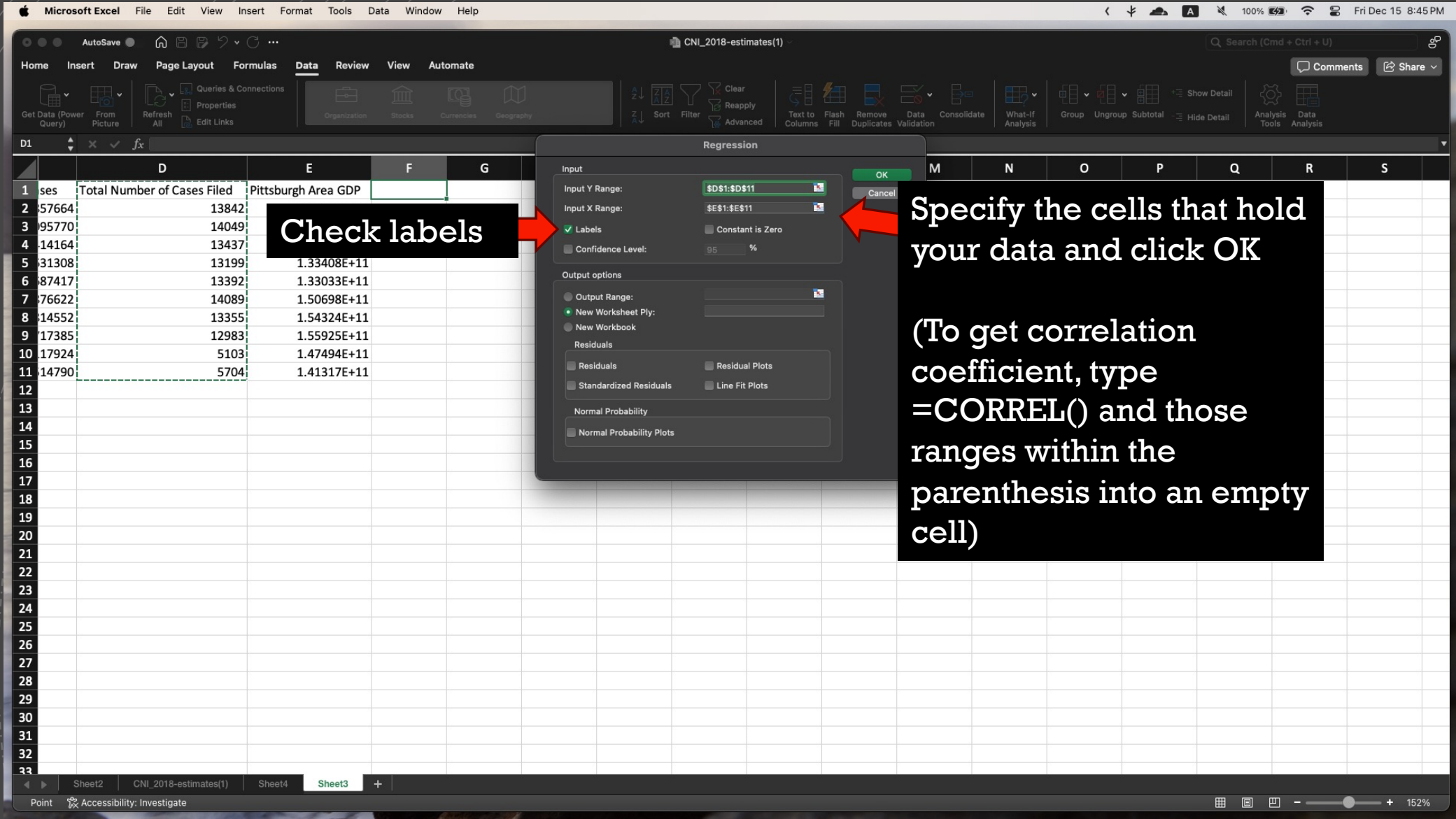
Data Analysis

Analysis Tools

- Regression
- Sampling
- t-Test: Paired Two Sample for Means
- t-Test: Two-Sample Assuming Equal Variances
- t-Test: Two-Sample Assuming Unequal Variances
- z-Test: Two Sample for Means

OK Cancel

Scroll down on the menu and select regression



Check labels

Specify the cells that hold your data and click OK

(To get correlation coefficient, type =CORREL() and those ranges within the parenthesis into an empty cell)

	D	E	F	G
1	ses	Total Number of Cases Filed	Pittsburgh Area GDP	
2	57664	13842		
3	95770	14049		
4	14164	13437		
5	31308	13199	1.33408E+11	
6	87417	13392	1.33033E+11	
7	76622	14089	1.50698E+11	
8	14552	13355	1.54324E+11	
9	17385	12983	1.55925E+11	
10	17924	5103	1.47494E+11	
11	14790	5704	1.41317E+11	

Regression

Input

Input Y Range:

Input X Range:

Labels Constant is Zero

Confidence Level: 95 %

Output options

Output Range:

New Worksheet Ply:

New Workbook

Residuals

Residuals Residual Plots

Standardized Residuals Line Fit Plots

Normal Probability

Normal Probability Plots

OK Cancel

Microsoft Excel File Edit View Insert Format Tools Data Window Help

Example Book

Home Insert Draw Page Layout Formulas Data Review View Automate

Get Data (Power Query) From Picture Refresh All Queries & Connections Properties Edit Links

Organization Stocks Currencies Geography

Sort Filter Clear Reapply Advanced

Text to Columns Flash Fill Remove Duplicates Data Validation Consolidate What-If Analysis

Group Ungroup Subtotal Show Detail Hide Detail

Analysis Tools Data Analysis

C8

	A	B	C	D	E	F	G	H	I	J	K	L	M	N
1	SUMMARY OUTPUT													
2														
3	<i>Regression Statistics</i>													
4	Multiple R	0.36700132		Correlation Coefficient	-0.3670013									
5	R Square	0.134689969												
6	Adjusted R Square	0.026526215												
7	Standard Error	3407.298456												
8	Observations	10												
9														
10	<i>ANOVA</i>													
11		<i>df</i>	<i>SS</i>	<i>MS</i>	<i>F</i>	<i>Significance F</i>								
12	Regression	1	14456855.95	14456855.95	1.24524126	0.29685752								
13	Residual	8	92877462.15	11609682.77										
14	Total	9	107334318.1											
15														
16		<i>Coefficients</i>	<i>Standard Error</i>	<i>t Stat</i>	<i>P-value</i>	<i>Lower 95%</i>	<i>Upper 95%</i>	<i>Lower 95.0%</i>	<i>Upper 95.0%</i>					
17	Intercept	40896.58252	25993.47176	1.573340525	0.1542857	-19044.471	100837.636	-19044.47085	100837.636					
18	Pittsburgh Area GDP	-2.15186E-07	1.92836E-07	-1.115903784	0.29685752	-6.599E-07	2.2949E-07	-6.59866E-07	2.2949E-07					
19														
20														
21														
22														
23														
24														
25														
26														
27														

Sheet2

Ready Accessibility: Inv

178%

Correlation Coefficient
 (got as described on the previous slide and just pasted over to this sheet)

P-value (>0.05)

Regressing the Number of Cases Filed on Gross Domestic Product, we can see that there is a slight negative correlation between the two, but that there is no statistically significant causal relationship between GDP and Landlord/Tenant Case Filings